



**SNDT Arts and Commerce College for Women, Karve
Road, Pune 411038**

Criterion VII

7.1.3: Describe the facilities in the Institution for the management of the following types of degradable and non-degradable waste

Geo-Tag Photographs of Facilities in the Institution

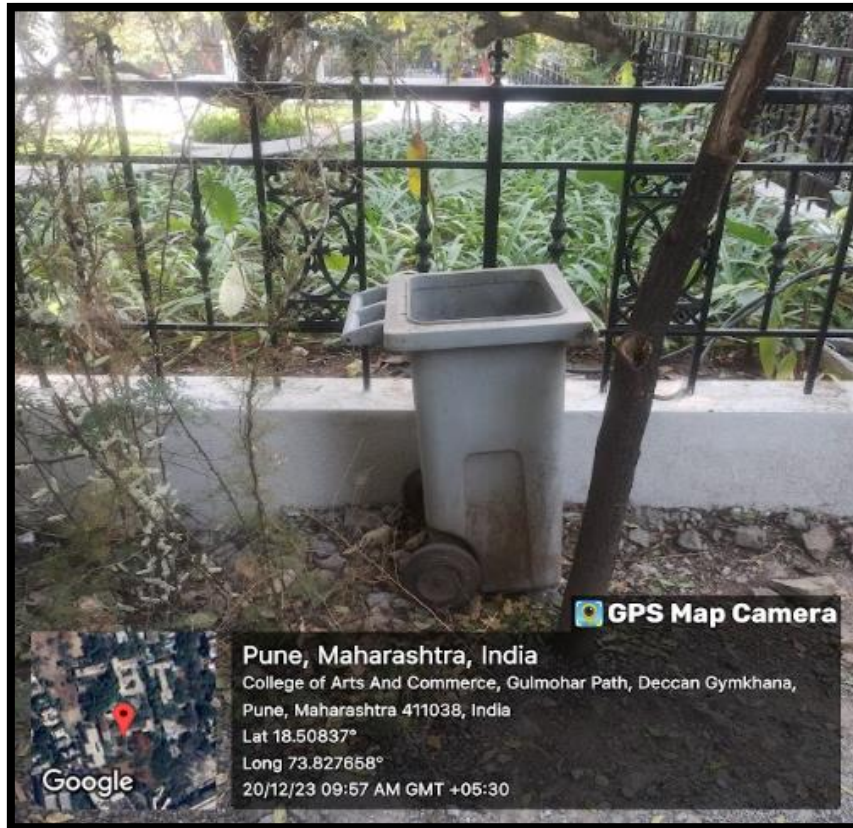


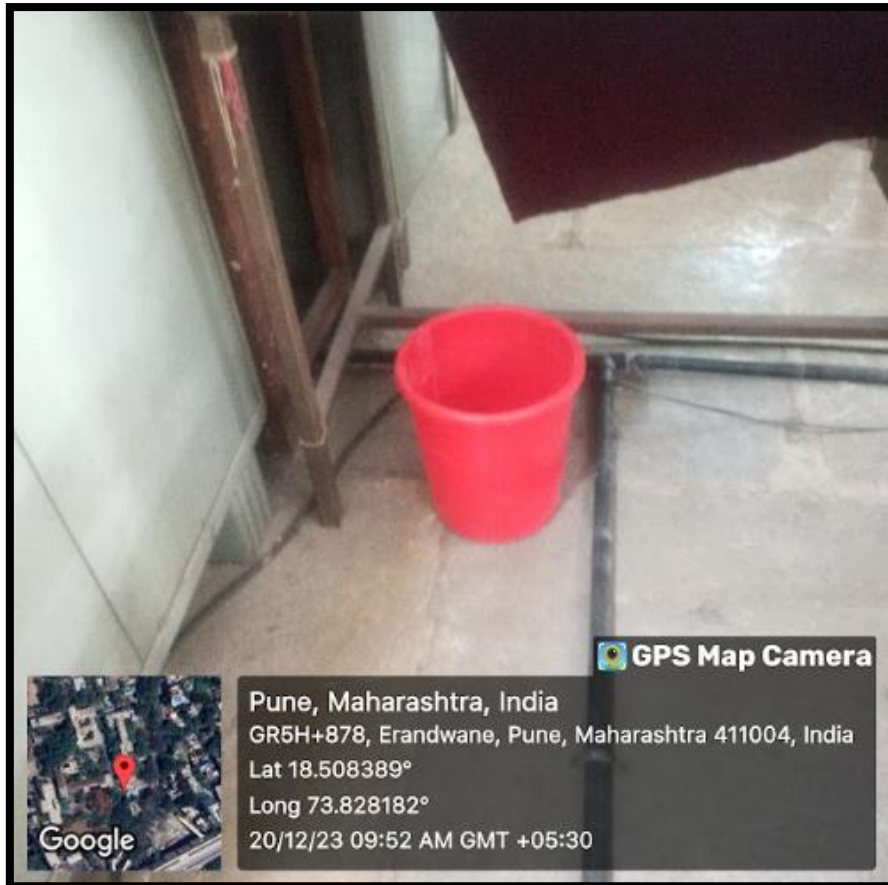
Contents

Geo-tag Photographs of Solid and Liquid waste Management System	3
Dustbin Kept in College Premises in Various Places.....	3
Liquid Waste Management System	4
Underground Water Supply System	6
Sanitary Napkin vending Machine installed in Washroom	7
Organic Compost Manure.....	9

Geo-tag Photographs of Solid and Liquid waste Management System

Dustbin Kept in College Premises in Various Places





The college has implemented a waste segregation system by installing separate bins for dry and wet waste throughout its premises, including washrooms, classrooms, halls, laboratories, and corridors. Sanitation staff are tasked with ensuring proper segregation of the collected waste, which is subsequently handed over to the municipal corporation for appropriate disposal. This initiative aligns with sustainable waste management practices and promotes environmental responsibility within the campus.

Liquid Waste Management System



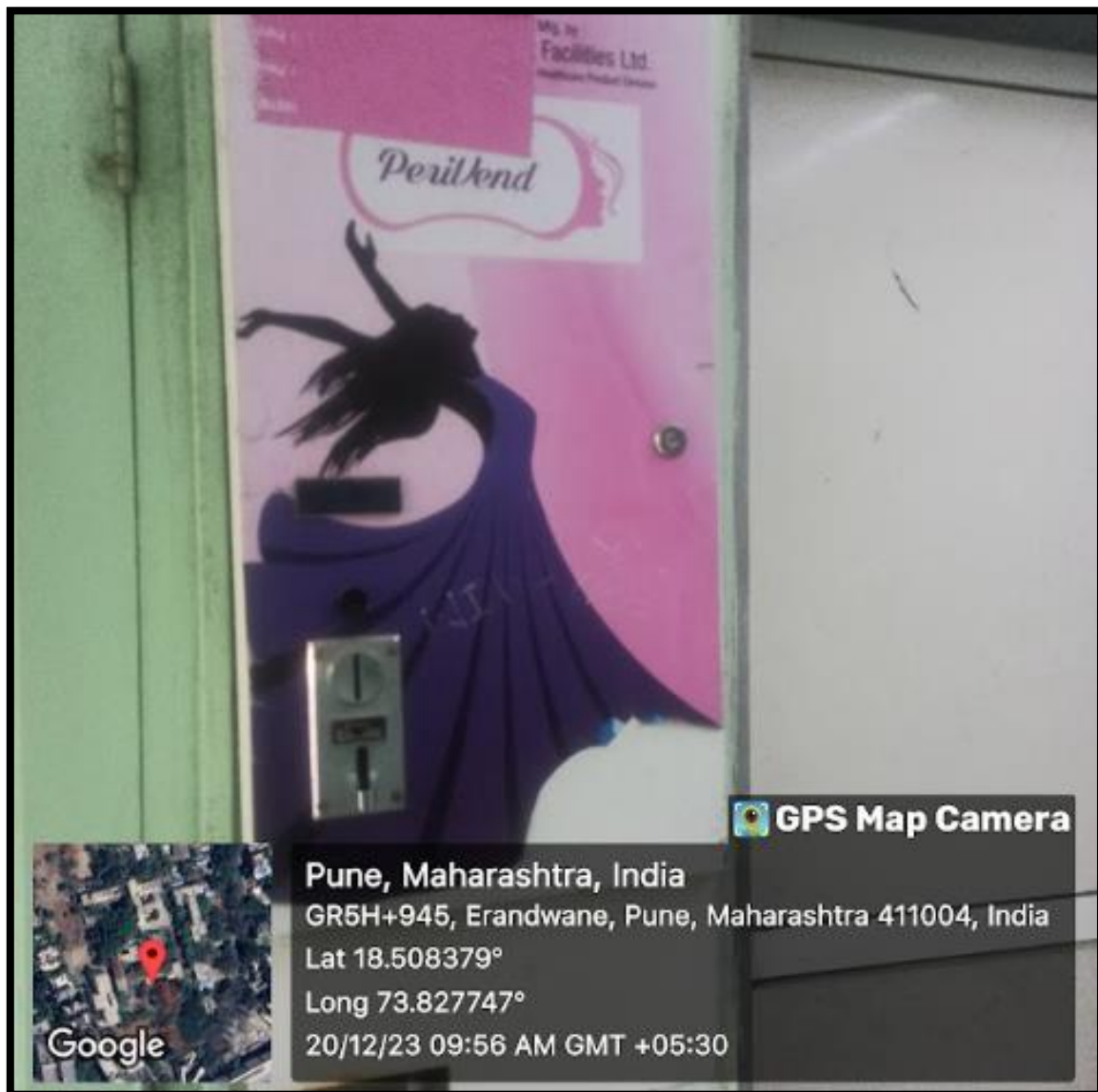
The college has implemented a wastewater management system to promote sustainable practices by repurposing wastewater for gardening. Student washbasins have been strategically installed in high-traffic areas, ensuring efficient collection of wastewaters. This water is systematically redirected to irrigate the garden located in front of the washrooms and the principal's cabin, thereby supporting environmental conservation and resource optimization efforts on campus.

Underground Water Supply System

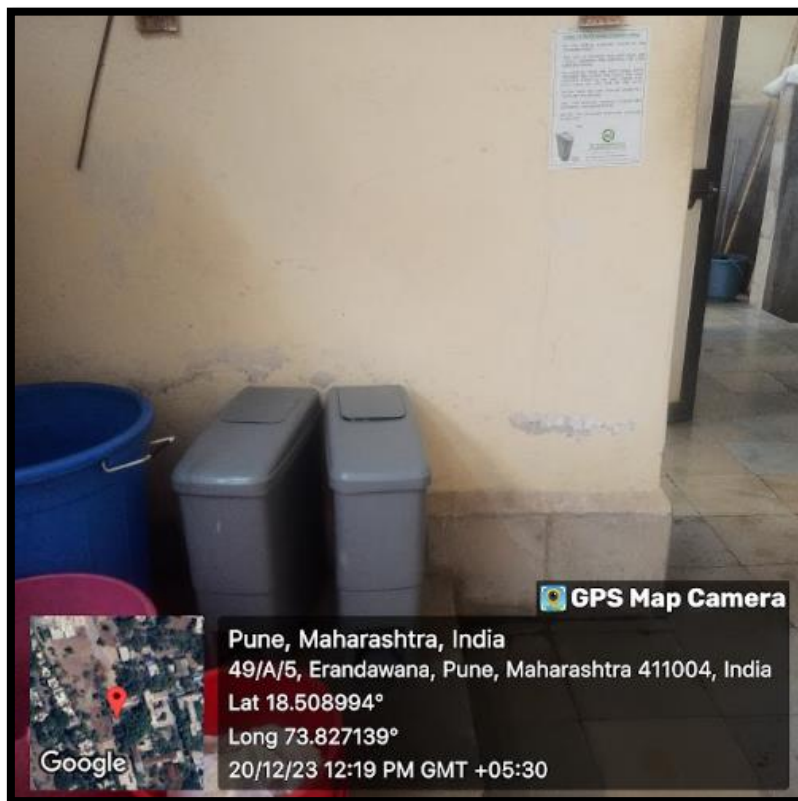


Due to the specific slope of the college building, a meticulous plan was devised to facilitate the drainage of percolating water away from beneath the structure, particularly during the monsoon season. This consideration was taken into account during the construction of the building at that time.

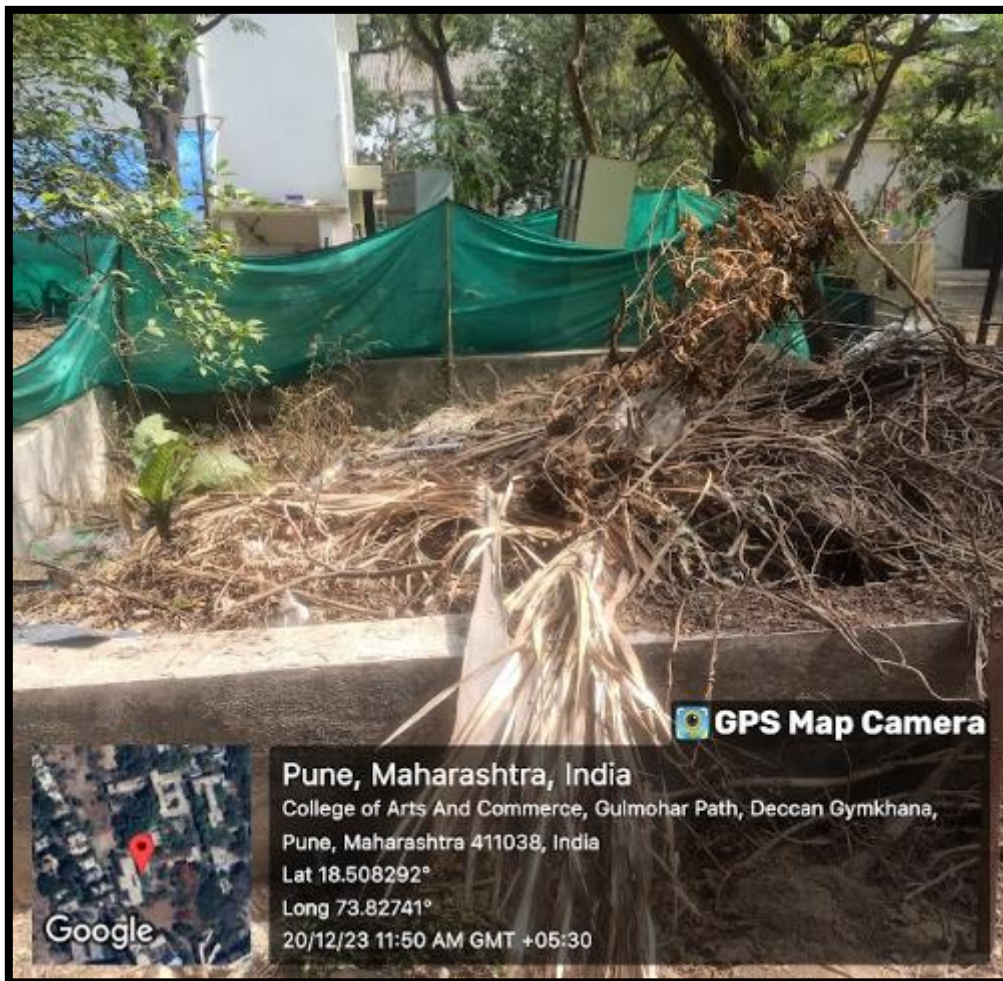
Sanitary Napkin vending Machine installed in Washroom



A vending machine for sanitary napkins, along with a disposal kit, has been installed in the student washrooms and hostel facilities to promote hygiene and accessibility.



Organic Compost Manure



A large trench has been excavated within the campus premises, and sun-dried mulch has been deposited into it. The resulting compost is subsequently utilized to enhance the garden's soil quality on the campus.



Appadram
PRINCIPAL (Addl. Charge)
S.N.D.T. Arts & Commerce
College for Women, Pune-38